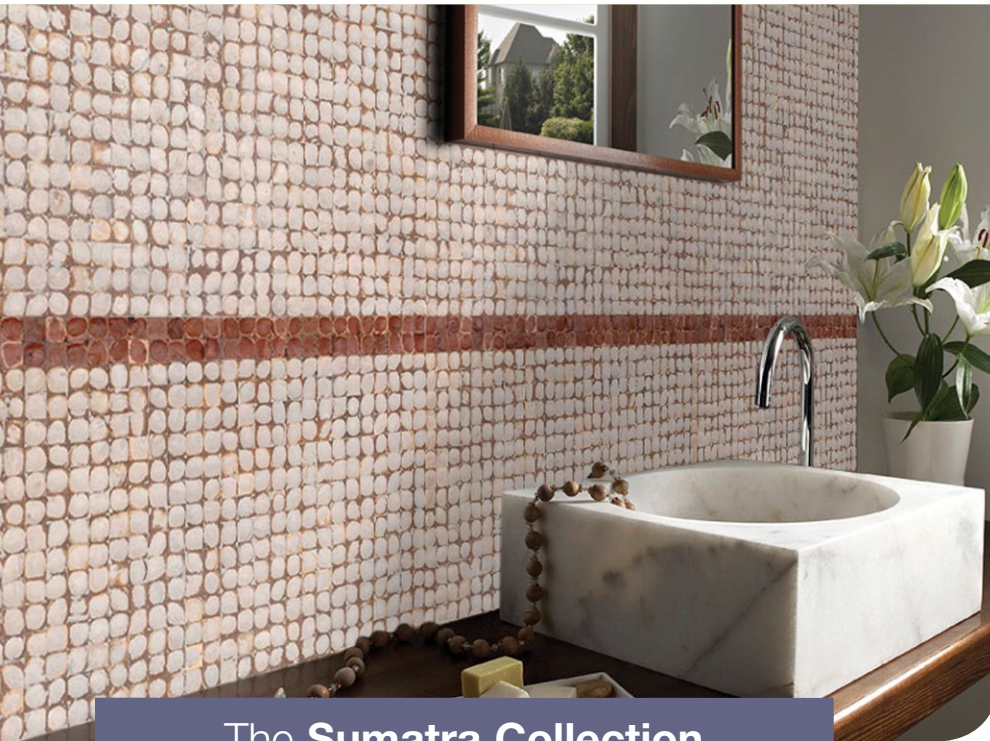


Kirei Coco Tiles

novo tropicale



The Java Collection



Cirebon Natural
KC-020



Babakan Urban
KC-022



Yogya White
KC-023



Losari Leather
KC-021

The Sumatra Collection

Flat/Square
Mesh Backed



Medan KC-013

Box +1
Mesh Backed

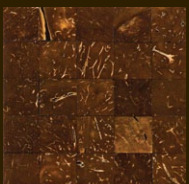


Batak KC-001

Rectangles
Mesh Backed



Sipora KC-014



Padang KC-008
(Plywood Backed)



Pulau KC-015

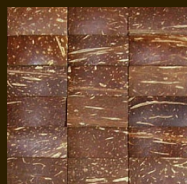


Gido KC-016

YOU
DESIGN



Lotu KC-017



Alasa KC-018

NEW FOR 2012
KIREI JAVA
COLLECTION...
PARADISE INSIDE.

The Tao of Kirei:

Pronounced "Key'-ray," Kirei is the Japanese character signifying "clean" or "beautiful."

We have chosen Kirei as the name for our company to reflect our dedication to the principles of elegant, sustainable design.

kirei [Ⓚ]

For Sales & Product Information:

Kirei USA
TEL 619-236-9924
FAX 240-220-5946
www.kireiusa.com
info@kireiusa.com

Kirei Coco Tile Specifications:

Bring a bit of the island life to modern design with Kirei Coco Tiles, manufactured using reclaimed coconut shell and low- or zero-VOC adhesives and finishes. Easy to install, Kirei Coco Tiles are great for wall covering, furniture and interior design feature elements.

The Java Collection

Kirei Java Collection tiles are a rigid self-backed tile adhered to a clean, smooth wall surface with a silicone adhesive.

Tile size: 16.5" x 16.5" (42cmx42cm)
Thickness: 1/8" (approx. max height)
Tile construction: Rigid tiles
Fire Rating: Class C (Class A treatment available)



BACK VIEW

The Sumatra Collection

Kirei Sumatra Collection tiles are a mesh-backed tile adhered to a clean, smooth wall surface with a thinset-type mortar.

Tile size: 11.8" x 11.8" (001/008/013/015/017)
 (30cm x 30cm)
 11" x 11" (014/016/018)
 (28cm x 28cm) (Custom sizes available)



BACK VIEW

Thickness: 1/8" (approx. max height)
Tile construction: Mesh-backed tiles (KC-008 plywood backed)
Fire Rating: Class C (Class A treatment available)



Environmental Benefits

Reduced Waste/Zero VOC/Carbon Sequestration

Kirei Coco Tiles reduce landfill waste and indoor air pollution. The reclaimed shells used are a rapidly renewable resource left after the edible portion of the coconut is harvested, and only low- or zero VOC adhesives or finishes are used. Until now, these shells have been discarded or burned, adding to landfill waste and air pollution. Utilizing these shells as building material also sequesters carbon that would otherwise be released.

Kirei Coco Tiles & LEED

- MR 4.1/4.2 Recycled Content
70+% post-industrial recycled material: Coconut Shells reclaimed after harvest
- MR 6 Rapidly Renewable Materials
Manufactured with 70+% rapidly renewable raw material: Coconuts grown in yearly harvest cycle.



INSTALLATION INSTRUCTIONS:

Step 1 ACCLIMATE: Kirei Coco Tiles are natural materials and as such must be acclimated to local temperature and climate conditions prior to installation. Open the boxes and allow air to circulate for 48 hours prior to installation. Store the open boxes horizontally.

Step 2 PREPARE: Clean the application surface to create a smooth surface for installation. If necessary primer and/or sand the surface per adhesive manufacturer guidelines. Be sure to remove sanding residue.

Step 3 MEASURE: Measure and mark guide lines for installation area, with a vertical lines marking the center and edges of the installation area and horizontal lines to mark the edges and serve as guides for tile installation.

Step 4 ADHESIVE:

Apply construction adhesive such as Liquid Nails Heavy Duty (Non Water-Cleanup) per manufacturer instructions to the back of individual tiles in an even grid pattern out to edges to ensure even distribution of adhesive.

Step 5 INSTALL:

Apply prepared tile to surface, starting at bottom of area to be covered, aligning tiles with guide lines, applying equal pressure to tile surface to facilitate bond. If tiles will be grouted leave an appropriate gap for grout between tiles. Otherwise leave a gap of 1-2mm between tiles to allow for natural expansion/contraction. Press tile to wall surface with even pressure for 5-10 seconds as specified by adhesive manufacturer to ensure complete adhesion. (It may be necessary to maintain pressure on the individual tiles for 5-10 minutes or longer depending on the adhesive and the wall surface.) Maintain pressure on the tiles until the adhesive has fully set.

CUTTING TILE:

Java Rigid Tiles: Kirei Java Collection rigid Coco Tiles may be separated along join lines for custom sizing. To cut tile chips use a standard ceramic tile blade.

Sumatra Mesh-Backed Tiles: Kirei Sumatra Collection Mesh-backed Coco Tiles may be cut to size by cutting mesh backer. To cut individual tile chips use a standard ceramic tile blade or shears.